

AVAILABLE
144,436 SQUARE FEET
SOON TO BE COMPLETED MEDICAL DEVICE FACILITY
VISIT PROPERTY WEBSITE AT
www.arecibo-puertorico.com



ARECIBO, PUERTO RICO

A brand new 144,436 sq. ft. manufacturing facility designed for assembling medical devices under a Class 100,000 particle, humidity and temperature controlled environment. The facility is located on an 18.03 acre lot. The facility provides built-in redundancy for the AHU systems, emergency backup generators and cooling towers. The building has been designed to support an expansion up to 300,000 sq. ft. Utilities installed are: three 600 tons Cool Water chillers, two 2000KW power generators, 250,000 gallon potable tank, compressed air, UPS for telecommunication and data equipment and an Integrated Building Management System. There is a 484 car parking capacity, conference and training rooms, infirmary area, a dedicated chemical storage and hazardous waste building as well as dedicated data and telecommunication rooms.

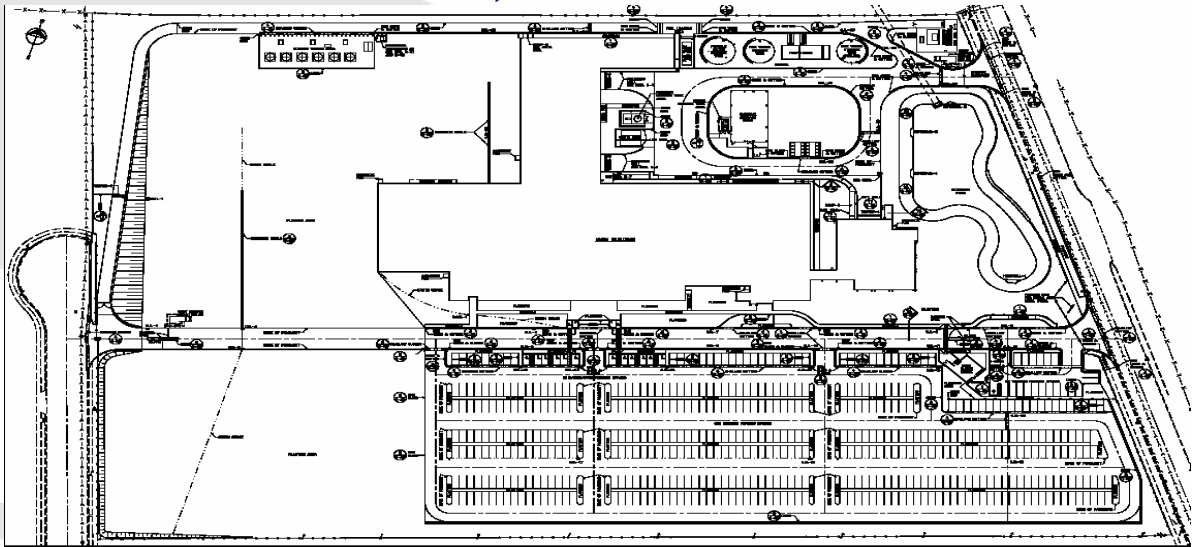
For more information contact
Klemmer Associates at 781.729.5000 or www.klemmerassoc.com
Rios Commercial at 787.765.1111 or www.rioscommercial.com



www.klemmerassoc.com
www.rioscommercial.com



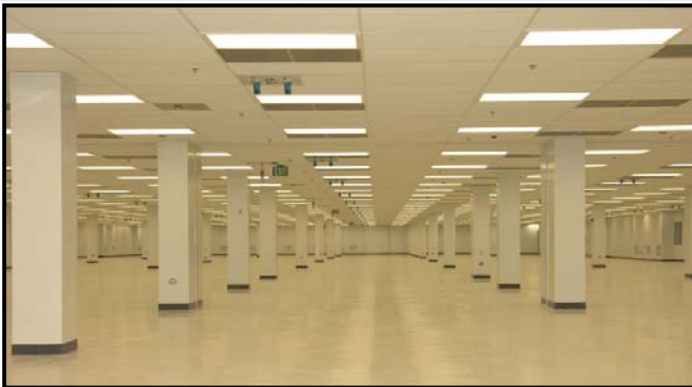
PR-2 KM 67.8 SANTANA WARD ARECIBO, PUERTO RICO



SPECIFICATIONS



Total Premises:	144, 436 SF on 18.03 acres
Office:	5,633 SF
Construction Type:	Concrete Block and steel
Roof:	Steel & concrete/energy smart membrane
Parking:	484 spaces
Floor:	Concrete
Loading:	5 docks
Expansion:	Up to 300,000 SF
Utilities:	-5,000 KVA main sub-station
	-Three 600 tons Cool Water chillers
	-Two 2000KW power generators
	- 250,000 gallon potable tank
	- Compressed air
	- UPS for telecommunication and data equipment
	- Integrated Building Management System



All information furnished regarding property for sale or lease is from sources deemed reliable, but no warranty or representation is made as to the accuracy thereof and same is submitted subject to errors, omissions, changes of price, rental or other conditions, prior sale or lease, or withdrawal without notice.

For additional information contact
Property Website: www.arecibo-puertorico.com
781.729.5000 or online at www.klemmerassoc.com
787.765.1111 or online at www.rioscommercial.com